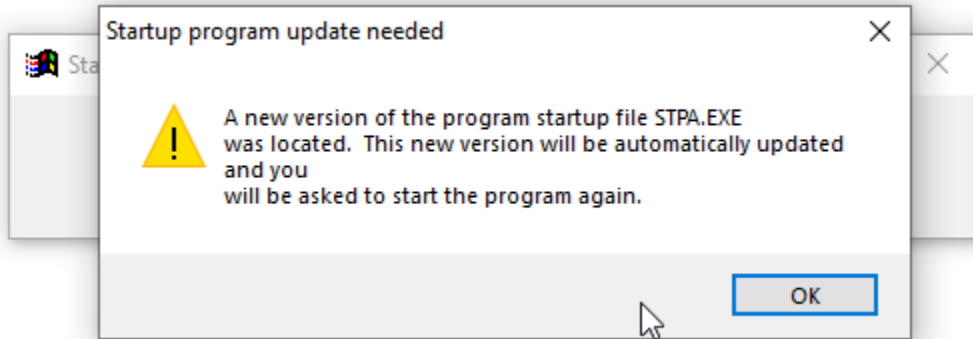


Thom Biller Upgrade Version v20.04e

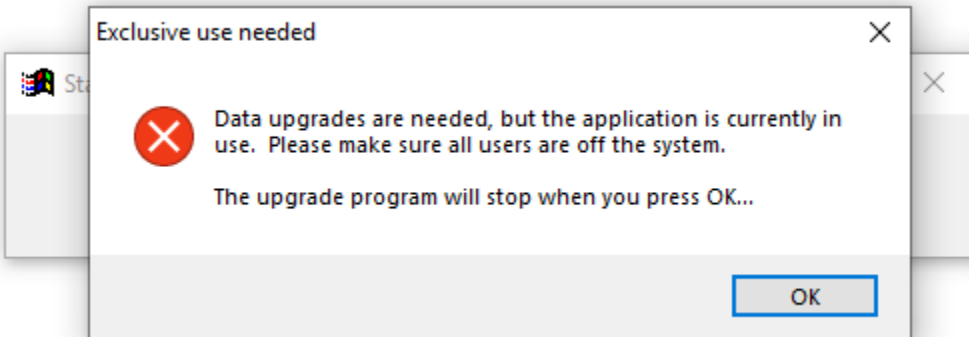
This upgrade assumes you are at least on version 20.04b. If not, please run it first.

*** New ***

All users will see an additional message before they run Thom Biller (below).



This new version of STPA.EXE will do a more careful check of exclusive use before running the upgrade. It will produce this message if someone is on the system the first time an upgrade is run when data upgrades are needed:



If you get this message, call all users to make sure they log off. As a last resort, go to Computer Management and close all files in the Thom Biller Data\ folder on your file server.

Finally, as a reminder, if after running an upgrade, a user gets a message that their program version does not match the new data version, double check that they are running Thom Biller with a shortcut that points to the loader program STPA.EXE (and not to the main program STPAX.EXE). Also double check that their UAC is set to "None.")

* Previous Directions (unchanged)*

If your IT staff are going to run your upgrade, make sure you give them a copy of this document and the email that was sent with the upgrade notice. Once the IT staff has completed the basic installation, please be sure to run any additional steps within Thom Biller that may be needed.

Note, you can use Windows 10 machines for the installation.

Additional Steps Needed Before Install: none.

Data File Changes: moderate. New telehealth fields added to sessions and rates.

Additional Steps Needed After Install: none

Contact Information:

Please call email me, Larry Tucker, at ltucker@thomchild.org if you have any questions. Also remember to check the Thom website for updates and news:

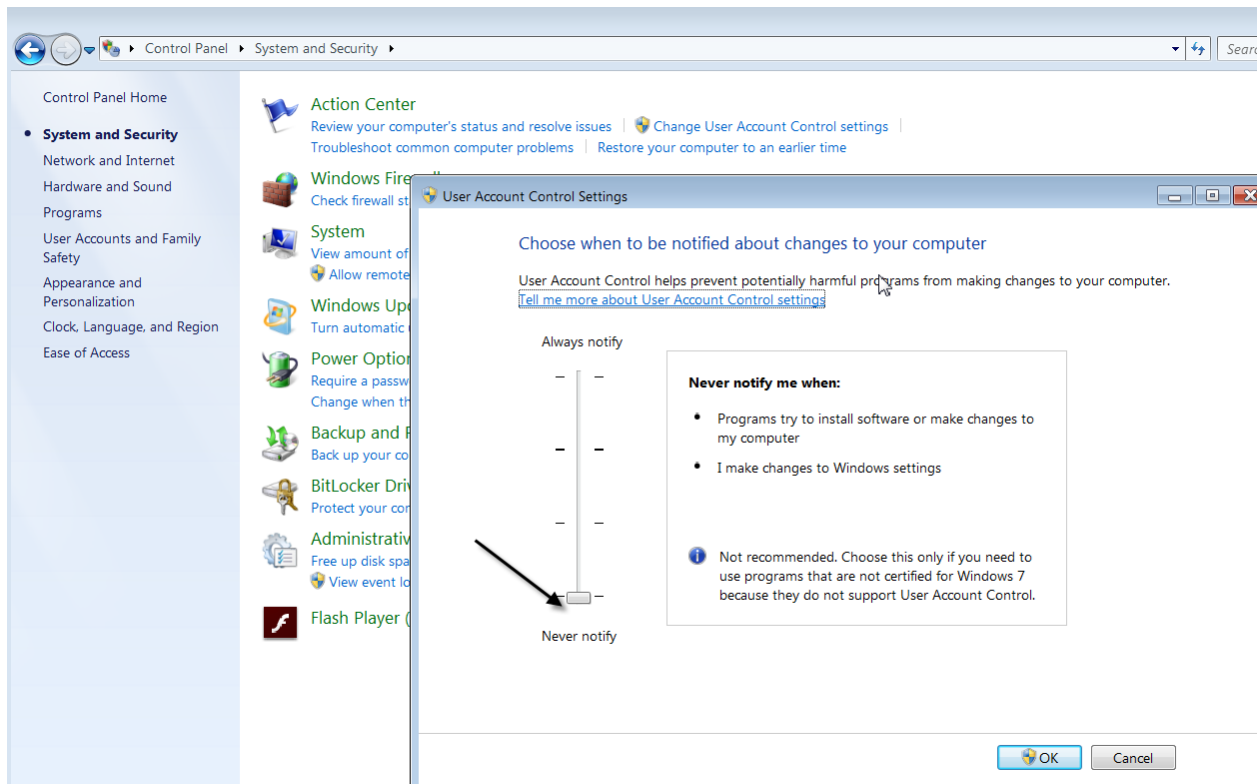
www.thomchild.org/thom-biller/thom-biller-updates

There is also a current copy of the User's Guide and "Generally Useful Documentation" such as instructions for adding a new workstation.

Installation Instructions:

Windows 10 machines can be used to run the upgrade. If you are on a network, and have run the previous upgrades, *then you only have to run this upgrade on a single workstation.* The updates will automatically propagate to all other machines running Thom Biller on the network.

1. Make sure you have backed up your data. *If your backup run automatically at night, it is best to run the upgrade first thing in the morning so you won't lose any work if you have to revert to the backup.*
2. Make sure no one else is using the Thom Biller software on the network and that it is not running on your computer (in a minimized window on your taskbar.)
3. For Base – Off site systems, make sure you complete any billing disk and recovery exchanges that may be in process. Both the Base and the Off-site systems must be on the same version of Thom Biller during a billing exchange. If one “side” upgrades before the other, then the off-site disk recovery will be disallowed. So, if you are currently downloading disks, or waiting to recover a download disk, do not run the upgrade until both the download and recovery processes are complete.
4. For network users, pick a single workstation that you will use for upgrades. Windows 7 or Windows 10 machines should work fine. Try to run the upgrade on this machine this time, and all future upgrades on the same machine because it may take some special configuration of UAC (#5) and dlls (#8).
5. Make sure User Account Control "UAC" is turned off ("Never Notify").

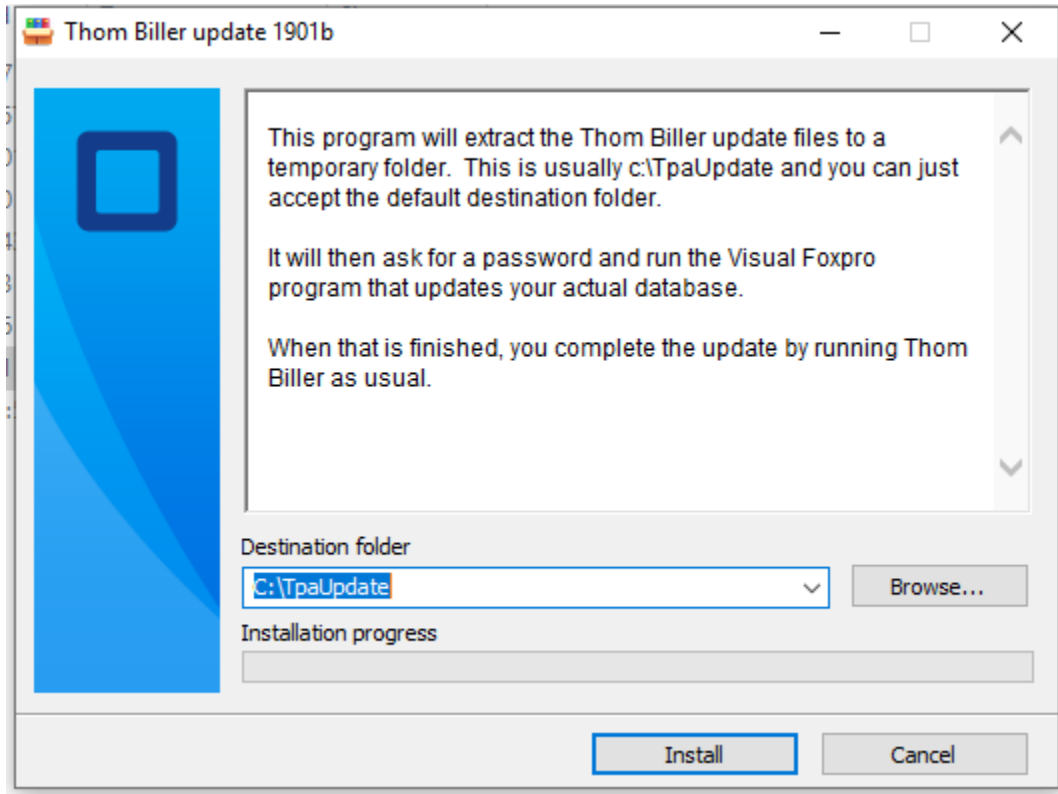


Any other setting will prevent the upgrade program from copying files. If the UAC is not off, pull the slider down and restart the computer. You must restart in order for the new UAC setting to take effect.

6. Run the upgrade executable from the web site:

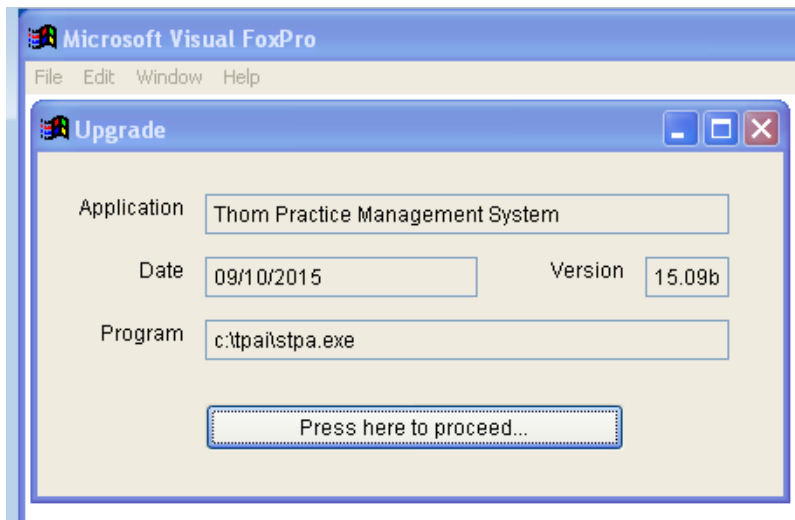
(www.thomchild.org/thombillerupdates.htm)

7. A WinRAR screen will start up.



Accept all the default choices and enter the password.

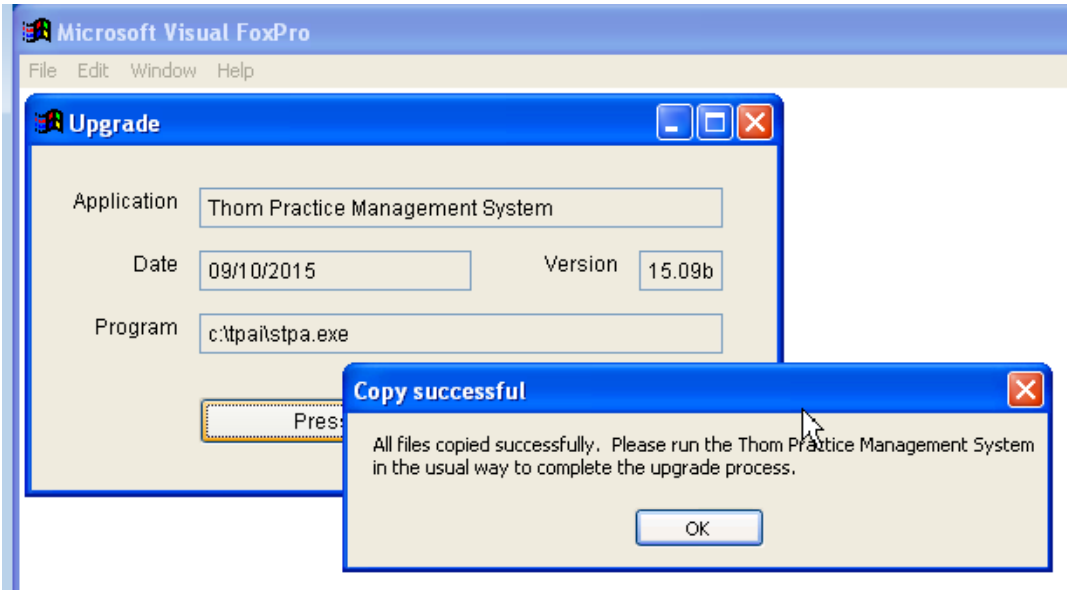
8. A FoxPro window will open to complete the upgrade (below). Press the "Proceed..." button to do this.



If this FoxPro "Upgrade" window does not appear, it means this computer does not have a dll in the correct location. Locate the msvc71.dll (probably on your c:\ root folder) and copy it to your

Windows\SysWow64 folder for 64-bit machines. (For 32-bit Win 7, copy the msvc71.dll to your Windows\System32 folder). If you need to make this change, restart the computer and re-try the upgrade.

Assuming the Foxpro Upgrade routine runs, it will locate your data wherever it is on the network and upgrade it. It will tell you whether all files copied successfully or not (below):



If files do not copy correctly, it is usually because the UAC setting (#4) is incorrect.

9. Start the Thom Biller software as usual. This will complete the upgrade and set the title bar version. (If you get a warning that data changes are needed and someone else is running the program, please make sure everyone is logged off and try running Thom Biller again.) This step may bring over a new version of the loader program and ask you to restart Thom Biller. It may also bring over a new version of VFPSSetup and automatically run it as well.

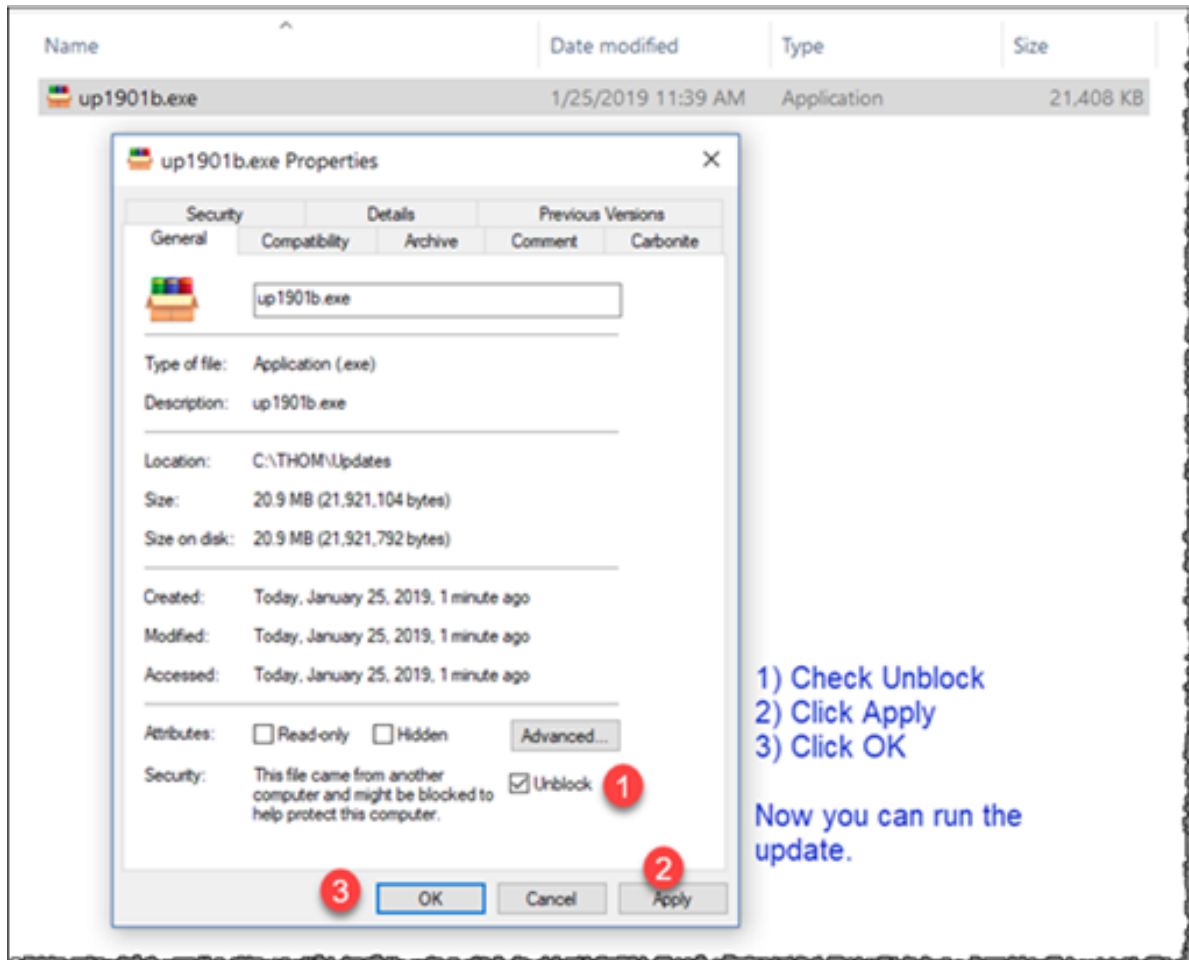
For network users, DO NOT run the upgrade on every machine. Running it once on the machine you have chosen for upgrades will be enough to send the upgrade to all other workstations the next time they start the Thom Biller.

Problems downloading or running the upgrade file

If you get a Windows error, such as "Error: Windows cannot access the specified device, path, or file. You may not have the appropriate permission to access the item" see the following:

- 1) Make sure your anti-virus software is stopped temporarily and not interfering.
- 2) Save the file to a local (not network) folder, such as c:\temp, that you know you have full permissions to.
- 3) Look at the file properties and "Unblock".

1. Right click the file and select “Properties”, then click the “Unblock” checkbox at the “Security” section.
2. Click “Apply”
3. Click “OK”



For more discussion of problems with Windows reading a downloaded file, see this link:

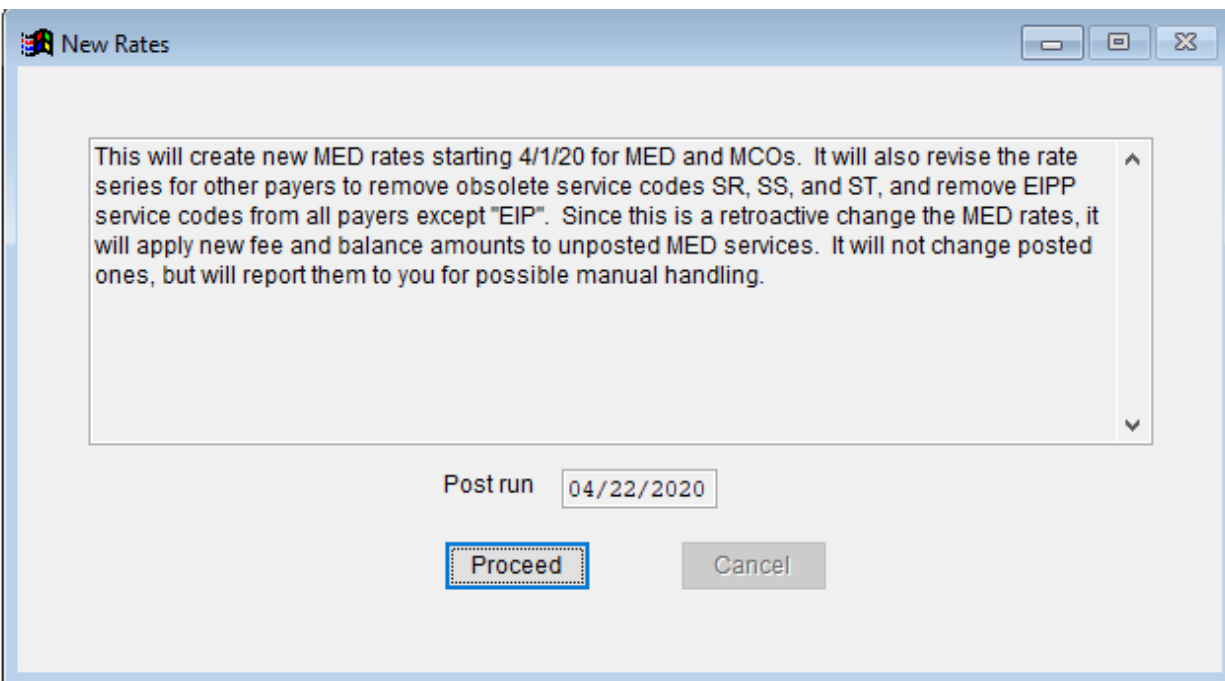
<https://support.microsoft.com/en-us/help/2669244/windows-cannot-access-the-specified-device-path-or-file-error-when-you>

Upgrade Details V20.04e

New MassHealth Rates and Rate File Clean Up

The upgrade applies the new MassHealth rates and also cleans up some other codes, so all previous rate series in your rate file will be closed as of 3/31/20 and new ones started as of 4/1/20. The new MassHealth rates are discussed below and are applied to MED and other MCOs. All payers will have some obsolete codes removed from their new rate series, even though their actual rates will not be changed. So, for example, you will see a new Cigna rate series starting 4/1/20 even though none of the rate amounts are changed; it will be missing the obsolete codes (also discussed below).

At startup, the first base or standalone workstation that runs the upgrade on your network will see this screen (it does not run at off-site programs):



This will create the new rates and apply them to any unposted sessions. For off-site programs, you will receive the new rates from your base system on your next disk recovery and any unposted sessions since 4/1/20 will get new rates applied at the base when they download them.

MassHealth recently sent out the following new rates (below):

Updated Rates for Certain EI Services to Address Concerns Related to COVID-19

To support EI providers during the COVID-19 emergency, for dates of service from April 1, 2020, through July 31, 2020, EOHHS will increase rates for certain MassHealth-covered EI services by 10% above current rates.

The following fee schedule identifies the services and new rates:

Service Code	Service Description	Per Unit
H2015	Child visit – day care	\$25.85
H2015	Child visit – hospital	\$25.85
H2015	Child visit	\$25.85
T1015	Center-based individual	\$21.63
96165-U1	EI-only child group (15 minutes)	\$7.54
96164-U1	EI-only child group (30 minutes)	\$15.07
96165-U2	Community child group (15 minutes)	\$9.90
96164-U2	Community child group (30 minutes)	\$19.80
T1027	Parent-focused group	\$9.67
T1023	Screening	\$30.15
T1024	Assessment	\$34.61

If updated rates are promulgated during the pendency of the COVID-19 public health emergency, those rates will be increased by 10% for the duration of the emergency.

Note, the T1023 Screening code is no longer used for EI services so will not be included in the upgrade.

The upgrade will automatically apply the new MassHealth rates to your rate file for MED billing and MCOs. It assumes that your MCOs are correctly tagged with a DPH Category = "X" (below):

Rates

Billing		Services	
Billing Type	FAM	Template	FAM
Name	FALLON MED		
PO Box 211308	Street1	PO Box 211308	
Eagan, MN 55121-2908	Street2		
	City	Eagan	
DPH Billed To Code	06	State	MN Zip 55121-2908
DPH Category	X	Phone	
		Dates for these rates	
		Begin	04/01/2020
		End	/ /
		SSP Payer	
		Schedule	OCT-NON
		Autism Secondary Payer	

In this example, we are using “FAM” as the billing type for Fallon Medicaid MCO, and it is correctly labeled with the “X” DPH Category. You will probably have different billing types in your system (since you create and manage them on your own), but all MCOs should have this “X” DPH category.

Here are the new MED rates that will be created for MED and your MCOs:

Basic Rates by Billing and Service										
Billing	Overall Template	Begin	End	SSP Payer	Schedule	DPH Code	DPH Categ.	DPH Form	Needs PA	
MED	MEDICAID	MED	04/01/2020	/ /	MED	OCT-NON	02	M	H	
TA	HOME VISIT									
	Procedure Line Description:			DPH Serv: A	Code: H2015		Mod:		Rate: 103.40	
	ABA: No SSP Services:			Present:			Needs PA:		Units/hr: 4.00	
	Disallow Telehealth:						ProStatus:		Init Sv:	
	Was 94.00									
TB	CENTER-BASED IND. VISIT									
	Procedure Line Description:			DPH Serv: B	Code: T1015		Mod: TL		Rate: 86.52	
	ABA: No SSP Services:			Present:			Needs PA:		Units/hr: 4.00	
	Disallow Telehealth:						ProStatus:		Init Sv:	
	Was 78.64									
TD	PARENT-FOCUSED GROUP SESSION									
	Procedure Line Description:			DPH Serv: D	Code: T1027		Mod: TL		Rate: 38.68	
	ABA: No SSP Services:			Present:			Needs PA:		Units/hr: 4.00	
	Disallow Telehealth:						ProStatus:		Init Sv:	
	Was 35.16									
TG	ASSESSMENT									
	Procedure Line Description:			DPH Serv: G	Code: T1024		Mod:		Rate: 138.44	
	ABA: No SSP Services:			Present:			Needs PA:		Units/hr: 4.00	
	Disallow Telehealth:						ProStatus:		Init Sv:	
	Was 125.84									
TH	ASSESSMENT									
	Procedure Line Description:			DPH Serv: H	Code: T1024		Mod:		Rate: 138.44	
	ABA: No SSP Services:			Present:			Needs PA:		Units/hr: 4.00	
	Disallow Telehealth:						ProStatus:		Init Sv:	
	Was 125.84									
TI	INTAKE HOME VISIT									
	Procedure Line Description:			DPH Serv: I	Code: H2015		Mod:		Rate: 103.40	
	ABA: No SSP Services:			Present:			Needs PA:		Units/hr: 4.00	
	Disallow Telehealth:						ProStatus:		Init Sv:	
	Was 94.00									
TM	Community Child Grp Initial (30 minutes)									
	Procedure Line Description:			DPH Serv: M	Code: 96164		Mod: U2		Rate: 19.80 Flat	
	ABA: No SSP Services:			Present:			Needs PA:		Units/hr: 0.00	
	Disallow Telehealth:						ProStatus:		Init Sv:	
	Was 18.00									
TN	EI Only Child Grp Initial (30 minutes)									
	Procedure Line Description:			DPH Serv: N	Code: 96164		Mod: U1		Rate: 15.07 Flat	
	ABA: No SSP Services:			Present:			Needs PA:		Units/hr: 0.00	
	Disallow Telehealth:						ProStatus:		Init Sv:	
	Was 13.70									
TW	Community Child Grp Subsequent units									
	Procedure Line Description:			DPH Serv: M	Code: 96165		Mod: U2		Rate: 39.60	
	ABA: No SSP Services:			Present:			Needs PA:		Units/hr: 4.00	
	Disallow Telehealth:						ProStatus:		Init Sv: TM	
	Was 36									
TX	EI Only Child Grp Subsequent units									
	Procedure Line Description:			DPH Serv: N	Code: 96165		Mod: U1		Rate: 30.16	
	ABA: No SSP Services:			Present:			Needs PA:		Units/hr: 4.00	
	Disallow Telehealth:						ProStatus:		Init Sv: TN	

The rate upgrade will also clean up some lingering obsolete codes that may be in your rate file. It removes the "SR", "SS", and "ST" codes that used to be used for "subsequent" SSP services. These were no longer needed since BCB stopped using that coding scheme a year ago. Here is how SSP service codes now look for non-BCB payers:

04/21/2020

Page: 1

Basic Rates by Billing and Service

Billing	Overall Template	Begin	End	SSP Payer	Schedule	DPH Code	DPH Categ.	DPH Form	Needs PA
MED	MEDICAID	MED	04/01/2020	/ /	MED	OCT-NOV	02	M	H
SB	Direct Instruction (low rate)			DPH Serv: S	Code: H2019	Mod: U2	Rate: 58.92		
	Procedure Line Description:					Needs PA:	Units/hr: 4.00		
	ABA: Yes SSP Services: DI			Present: C,B		ProStatus: P,O	Init Sv:		
	Disallow Telehealth:								
	No change from last rate series.								
SC	Direct Instruction (high rate)			DPH Serv: S	Code: H2012	Mod: U2	Rate: 111.36		
	Procedure Line Description:					Needs PA:	Units/hr: 1.00		
	ABA: Yes SSP Services: DI			Present: C,B		ProStatus: L	Init Sv:		
	Disallow Telehealth:								
	No change from last rate series.								
SD	Initial Assessment			DPH Serv: S	Code: H0031	Mod: U2	Rate: 111.36		
	Procedure Line Description:					Needs PA:	Units/hr: 4.00		
	ABA: Yes SSP Services: IA			Present: C,P,B,N		ProStatus: L	Init Sv:		
	Disallow Telehealth:								
	No change from last rate series.								
SE	Re-assessment			DPH Serv: S	Code: H0031	Mod: U2	Rate: 111.36		
	Procedure Line Description:					Needs PA:	Units/hr: 4.00		
	ABA: Yes SSP Services: RA,SA			Present: C,P,B,N		ProStatus: L	Init Sv:		
	Disallow Telehealth:								
	No change from last rate series.								
SF	Treatment Planning			DPH Serv: S	Code: H0031	Mod: U2	Rate: 111.36		
	Procedure Line Description:					Needs PA:	Units/hr: 4.00		
	ABA: Yes SSP Services: TP			Present: C,P,B,N		ProStatus: L	Init Sv:		
	Disallow Telehealth:								
	No change from last rate series.								
SG	Parent Training			DPH Serv: S	Code: H2012	Mod: U2	Rate: 111.36		
	Procedure Line Description:					Needs PA:	Units/hr: 1.00		
	ABA: Yes SSP Services: PT			Present: P,B		ProStatus: L	Init Sv:		
	Disallow Telehealth:								
	No change from last rate series.								
SL	Supervision (high rate)			DPH Serv: S	Code: H0032	Mod: U2	Rate: 111.36		
	Procedure Line Description:					Needs PA:	Units/hr: 4.00		
	ABA: Yes SSP Services: SUP			Present: P,B		ProStatus: L	Init Sv:		
	Disallow Telehealth:								
	No change from last rate series.								
Count:	7								

Old "subsequent" codes SR, SS, and ST removed

The upgrade also removes all EIPP codes from payers other than "EIP" (TP, TQ, TT, TU, and TV) since all EIPP billing now goes directly to "EIP". Only agencies with EIPP programs will see these codes and they are restricted to "EIP" billing (below):

04/22/2020

Page: 1

Basic Rates by Billing and Service

Billing	Overall Template	Begin	End	SSP Payer	Schedule	DPH Code	DPH Categ.	DPH Form	Needs PA
EIP	DPH	04/01/2020	/ /						
TP	EIPP Home Visit		DPH Serv: P	Code: H2015	Mod:	Rate: 86.99	Flat		
	Procedure Line Description:				Needs PA:	Units/hr: 4.00			
	ABA: No SSP Services:		Present:		ProStatus:	Init Sv:			
	Disallow Telehealth:								
	No change from last rate series.								
TQ	EIPP Screening		DPH Serv: E	Code: T1023	Mod:	Rate: 109.64			
	Procedure Line Description:				Needs PA:	Units/hr: 4.00			
	ABA: No SSP Services:		Present:		ProStatus:	Init Sv:			
	Disallow Telehealth:								
	No change from last rate series.								
TT	EIPP Group		DPH Serv: T	Code: H2015	Mod:	Rate: 34.32			
	Procedure Line Description:				Needs PA:	Units/hr: 4.00			
	ABA: No SSP Services:		Present:		ProStatus:	Init Sv:			
	Disallow Telehealth:								
	No change from last rate series.								
TU	EIPP Consultant		DPH Serv: U	Code: H2015	Mod:	Rate: 89.40			
	Procedure Line Description:				Needs PA:	Units/hr: 4.00			
	ABA: No SSP Services:		Present:		ProStatus:	Init Sv:			
	Disallow Telehealth:								
	No change from last rate series.								
TV	EIPP Initial Home Visit		DPH Serv: V	Code: H2015	Mod:	Rate: 173.98	Flat		
	Procedure Line Description:				Needs PA:	Units/hr: 4.00			
	ABA: No SSP Services:		Present:		ProStatus:	Init Sv:			
	Disallow Telehealth:								
	No change from last rate series.								

Count: 5