

## You've got questions about your baby's development...

*You've heard* that every child develops at his own pace. Some children sit up, or crawl, or learn to walk or talk earlier than others. You may be worried that your baby seems to be having difficulty with one or more early developmental skills.

Talk with your child's doctor. If you or your pediatrician is concerned that your child's development is delayed in one or more areas, it's good to know that there is a team of highly trained Early Intervention specialists who can help. You and your pediatrician can count on Early Intervention<sup>1</sup> to follow through with further

screening and/or evaluation for your child and to answer your questions — no matter how complicated, or simple.

Thom Child & Family Services wants you to have the developmental checklist on the reverse side of this sheet. It will help you evaluate your child's attempts to master first skills. You may find it helpful to use the checklist as you watch your child over the course of several days. If you think your child may be experiencing developmental delays, call us! Thom Child & Family Services can help.<sup>2</sup>



## Thom Child & Family Services operates an Early Intervention Program near you...

### Thom Anne Sullivan Center

126 Phoenix Avenue, Lowell, MA 01852  
Phone: (978) 453-8331 Fax: (978) 453-9254  
*Serving:* Lowell, Billerica, Chelmsford, Dracut, Dunstable, Tewksbury, Tyngsboro and Westford

### Thom Boston Metro Center

555 Amory Street, Jamaica Plain, MA 02130  
Phone: (617) 383-6522 Fax: (617) 383-6520  
*Serving:* Boston and Brookline including the Roslindale, Hyde Park, Mattapan, Dorchester, West Roxbury and Jamaica Plain neighborhoods

### Thom Charles River Early Intervention

465 Waverley Oaks Road, Suite 101  
Waltham, MA 02452  
Phone: (781) 894-6564 Fax: (781) 893-5938  
*Serving:* Waltham, Watertown and Belmont

### Thom Marlboro Area Early Intervention

340 Maple Street, Suite 410, Marlboro, MA 01752  
Phone: (508) 624-0304 Fax: (508) 624-0391  
*Serving:* Marlboro, Westboro, Southboro, Northboro and Hudson

### Thom Mystic Valley Early Intervention

10P Gill Street, Woburn, MA 01801  
Phone: (781) 932-2888 Fax: (781) 932-9809  
*Serving:* Arlington, Burlington, Lexington, Wilmington, Winchester and Woburn

### Thom Neponset Valley Early Intervention

101 Vanderbilt Avenue, Norwood, MA 02062  
Phone: (781) 551-0405 Fax: (781) 551-9901  
*Serving:* Canton, Dedham, Medfield, Millis, Norfolk, Norwood, Plainville, Sharon, Walpole, Westwood and Wrentham

### Thom Pentucket Early Intervention

320 Main Street, P.O. Box 956, West Newbury, MA 01985  
Phone: (978) 363-5553 Fax: (978) 363-2435  
*Serving:* Haverhill, Amesbury, Boxford, Rowley, Georgetown, Groveland, Merrimac, Newbury, Newburyport, Salisbury and West Newbury

### Thom Springfield Infant Toddler Services

1506A Allen Street, Springfield, MA 01118  
Phone: (413) 783-5500 Fax: (413) 782-7612  
*Serving:* Springfield, East Longmeadow, Longmeadow, Wilbraham and Hampden

### Thom Westfield Infant Toddler Services

209 Root Road, Westfield, MA 01085  
Phone: (413) 568-3942 Fax: (413) 568-5983  
*Serving:* Westfield, West Springfield, Agawam, Southwick, Granville, Blandford, Huntington, Chester, Middlefield, Russell, Montgomery, Tolland and Woronoco

### Thom Worcester Area Early Intervention

239 Mill Street, Suite B, Worcester, MA 01602  
Phone: (508) 752-8466 Fax: (774) 243-6611  
*Serving:* Auburn, Boylston, Holden, Leicester, Paxton, Shrewsbury, West Boylston and Worcester

## Why wait and see?

### Thom Child & Family Services Early Intervention will:

- Explain your rights, choices and responsibilities regarding Early Intervention services for your child.
- Conduct an initial evaluation to determine if your child is eligible for Early Intervention services.
- Talk with you about service choices and options available for your family through Early Intervention.

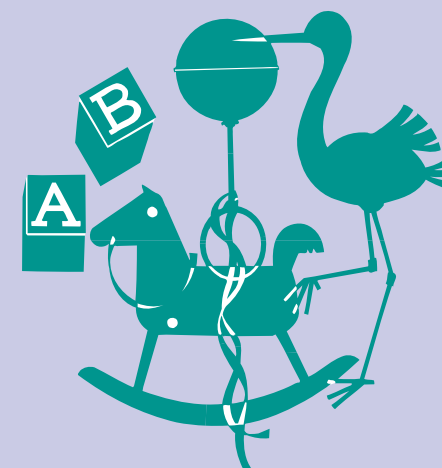


*Thom Child & Family Services has worked with pediatricians, early childhood professionals and others in your community to meet the needs of children and families since 1921.*

1. Early Intervention service providers include a range of pediatric specialists. Early Intervention serves children who live in Massachusetts ages birth to three years old and their families.
2. Early Intervention is a State and Federally mandated service that is funded by the MA Department of Public Health, Medicaid, MA Health Insurance, Health Maintenance Organizations (HMOs), and private contributions and fees. There are no direct costs to families for Early Intervention Screenings and Eligibility Evaluations and Assessments.

## Early Intervention

# Developmental Checklist for Children



Prepared for you by



[www.thomchild.org](http://www.thomchild.org)

# Early Intervention Developmental Checklist for Children 0–3 Years

## 1–2 months

- Able to suck and/or swallow easily
- Shows gain in height and weight
- Turns head from side to side when lying on tummy
- Startles easily in response to loud noise
- Turns head in direction that cheek is touched

## 3–4 months

- Turns head toward bright light and color
- Shows gain in height and weight
- Holds a rattle and smiles
- Makes sounds other than crying
- Rolls from tummy to back

## 4–6 months

- Rolls from tummy to back and back to tummy
- Plays on tummy
- Shows gain in height and weight
- Smiles in response to others
- Balances self while sitting for a few seconds
- Moves toys from hand to hand
- Reaches for and grasps objects

## 6–9 months

- Babbles and laughs out loud
- Turns head to locate sounds
- Shows gain in height and weight
- Sits independently
- Plays peek-a-boo and pat-a-cake
- Crawls or creeps forward on tummy by moving arms and legs

## 9–12 months

- Crawls or creeps on hands and knees
- Shows gain in height and weight
- Pulls to a stand
- Picks up small objects
- Walks with both hands held
- Waves “bye-bye”
- Imitates simple sounds
- Plays with parents and siblings
- Able to sit on own

## 12–15 months

- Says one word in addition to “mama” or “dada”
- Walks without help
- Drinks from a cup without help
- Enjoys picking up small objects and dropping into a container
- Takes turns rolling a ball

## 15–18 months

- Shows needs by grunting and pointing
- Shows emotions — happy or sad
- Imitates or repeats two word phrases such as “dada eat” or “mama play”
- Walks without support
- Likes to push, pull and dump things
- Feeds self with spoon but spills
- Looks at picture books/turns pages

## 18–24 months

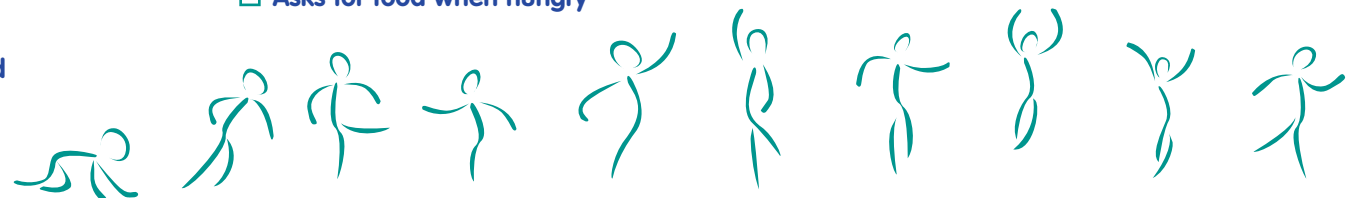
- Uses two and three word phrases such as “daddy come home”
- Has about 20 words/signs in vocabulary
- Says “no” often
- Carries objects when walking
- Shows affection, offers hugs and kisses
- Chews small bites of food
- Plays actively with toys
- Understands simple directions such as “give me the ball”
- Points to body parts such as nose, mouth and hair
- Kicks a large ball
- Asks for food when hungry

## 25–30 months

- Runs well
- Able to feed herself
- Gives first name when asked
- Enjoys scribbling with crayon or pencil
- Enjoys playing with other children
- Throws a ball forward
- Enjoys being read to
- Turns a door knob or unscrews lids
- Uses a variety of phrases and short sentences with new words being added to vocabulary each week

## 30–36 months

- Expresses himself in three word sentences
- Says first name when asked
- Washes and dries hands
- Copies a circle
- Jumps in place
- Repeats common rhymes



*Call a Thom program near you today!*